

# Master Plan Vision

## Progress Meeting

### WEST 1ST AVE STREETScape VISIONING

Calvin, Giordano & Associates, Inc.



Calvin, Giordano & Associates, Inc.  
A SAFEbuilt COMPANY

**PROGRESS MEETING**

August 14, 2024

- 01 Re-Cap
- 02 BSO and Fire Marshall Review & Feedback
- 03 Back-of-House Screening
- 04 Activation Strategy
- 05 Placemaking Components



# Re-Cap

01



Calvin, Giordano & Associates, Inc.  
A SAFEbuilt COMPANY





Overall available ROW is 40-ft



# Physical Overview | Street widths



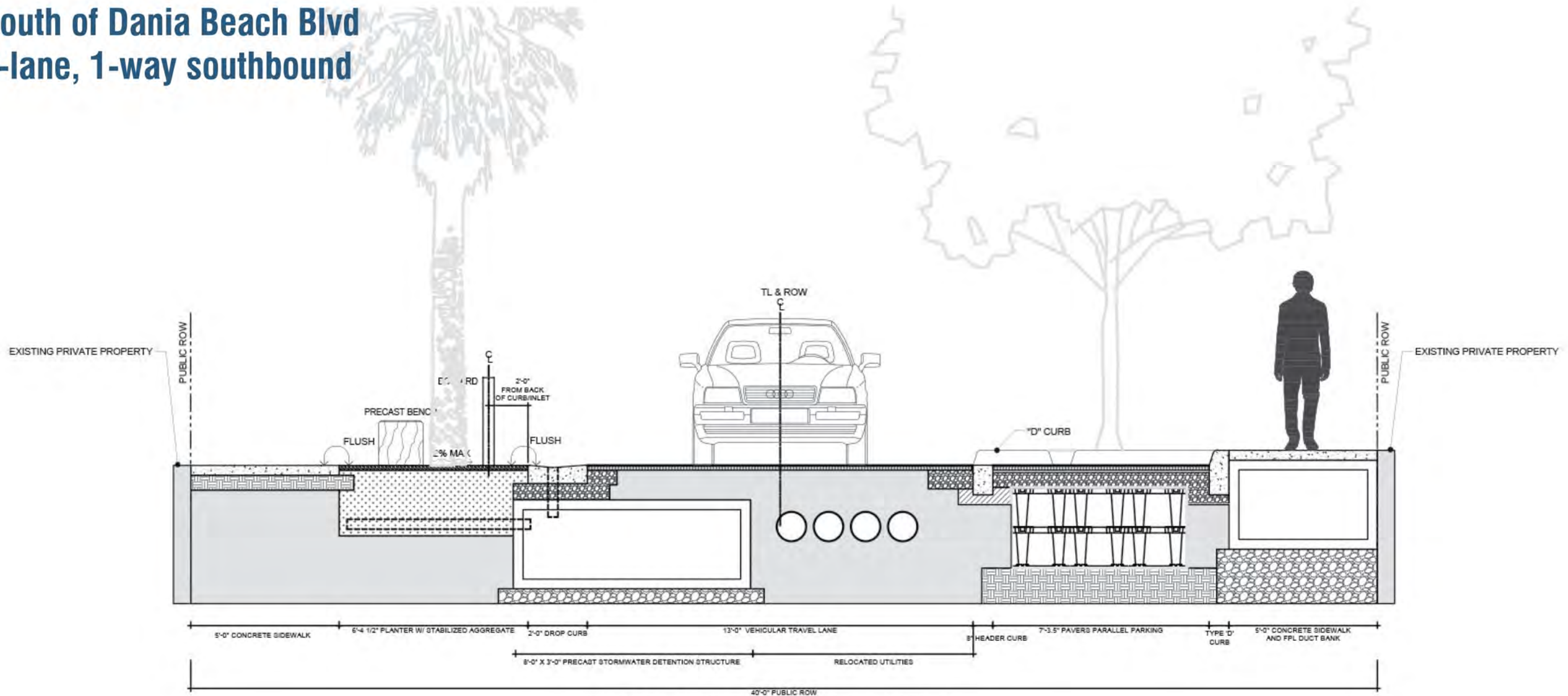


- 1. Spatial constraint of the available R.O.W., limited to only 40-feet.**
- 2. Back-of-house and service operations for properties on the east side of W 1st Ave.**
- 3. Overhead utility powerlines limit canopy growth of street tree species - limited to small trees.**
- 4. Underground utilities throughout the corridor - will require some realignment of utilities to minimize impacts on improvements.**

## Constraints



# South of Dania Beach Blvd 1-lane, 1-way southbound

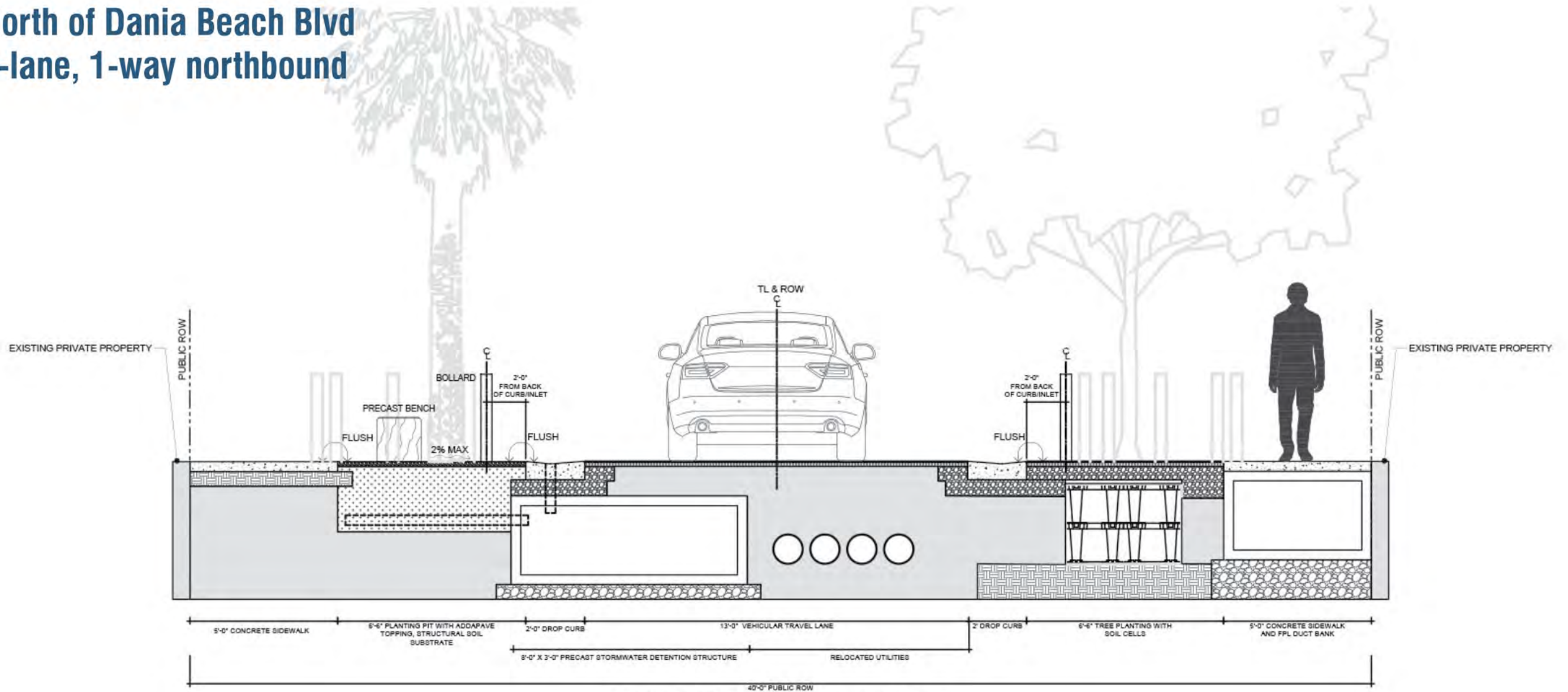


PROPOSED STREET SECTION - NW 1ST AVENUE  
LOCATION: SOUTH OF W DANIA BEACH BLVD

## Street Section | CSLIP Proposed



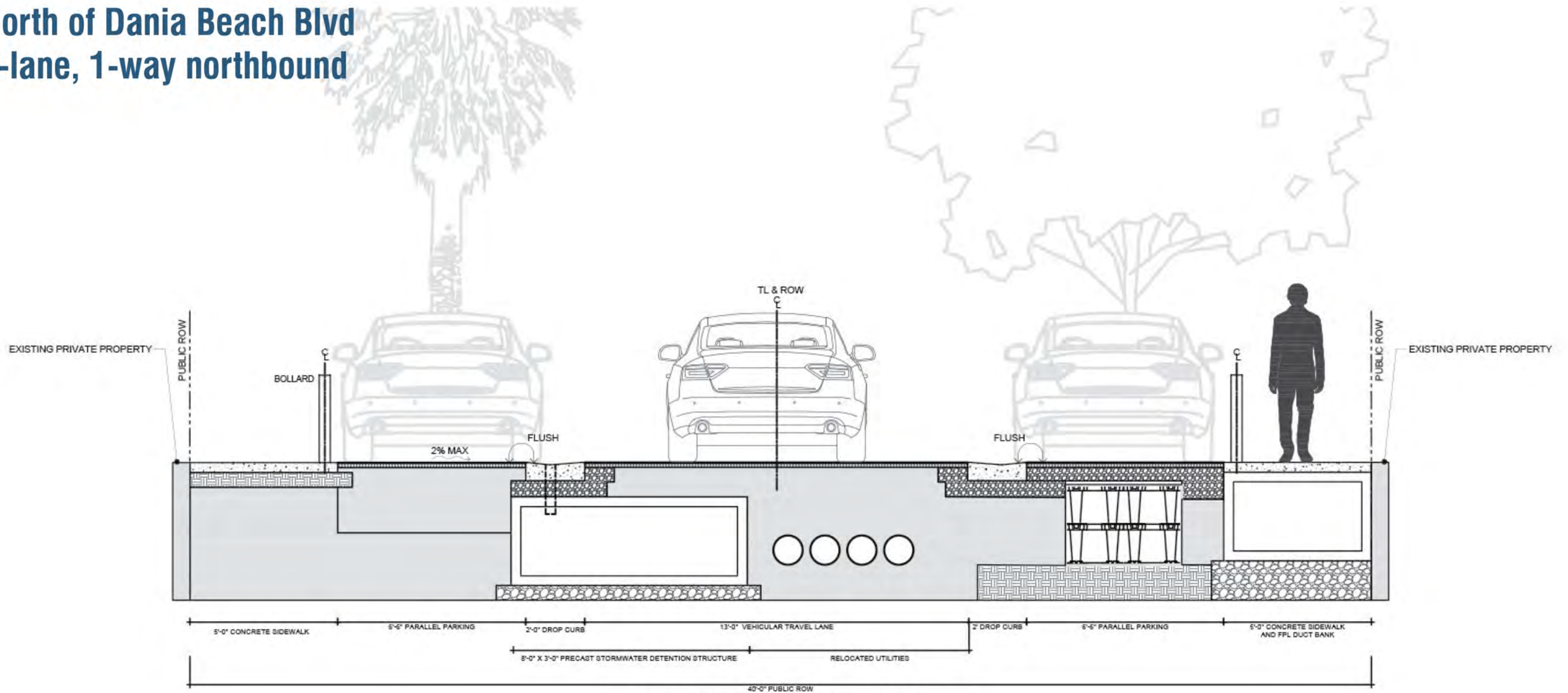
# North of Dania Beach Blvd 1-lane, 1-way northbound



PROPOSED STREET SECTION - NW 1ST AVENUE  
LOCATION: NORTH OF W DANIA BEACH BLVD

## Street Section | CSLIP Proposed

# North of Dania Beach Blvd 1-lane, 1-way northbound



PROPOSED STREET SECTION - NW 1ST AVENUE  
LOCATION: NORTH OF W DANIA BEACH BLVD

## Street Section | CSLIP Proposed





# Street Section | CSLIP Scenario



Calvin, Giordano & Associates, Inc.  
A SAFEbuilt COMPANY





# Street Section | CSLIP Scenario



Calvin, Giordano & Associates, Inc.  
A SAFEbuilt COMPANY



**Street Typology:** Curbless, flexible street

**Principal Character:** Continued civic center aesthetic theme

**Traffic:** Reduce vehicular dedicated area to a minimum

**Amenities:** Civic: Benches, Receptacles, Bollards, Lighting  
 New: Signage, Bike Racks,

**Parking:** Reduced qty, short-term only; promote the garage

**Loading Areas:** Provided for at designated locations, 3/block

**Circulation:** Redirecting traffic direction on W 1st Ave:

- 1-way northbound, north of Dania Beach Blvd
- 1-way southbound, south of Dania Beach Blvd

## Recommendations





# Approach | From 'Line' to 'Place'



# BSO and Fire Marshall Review & Feedback

02



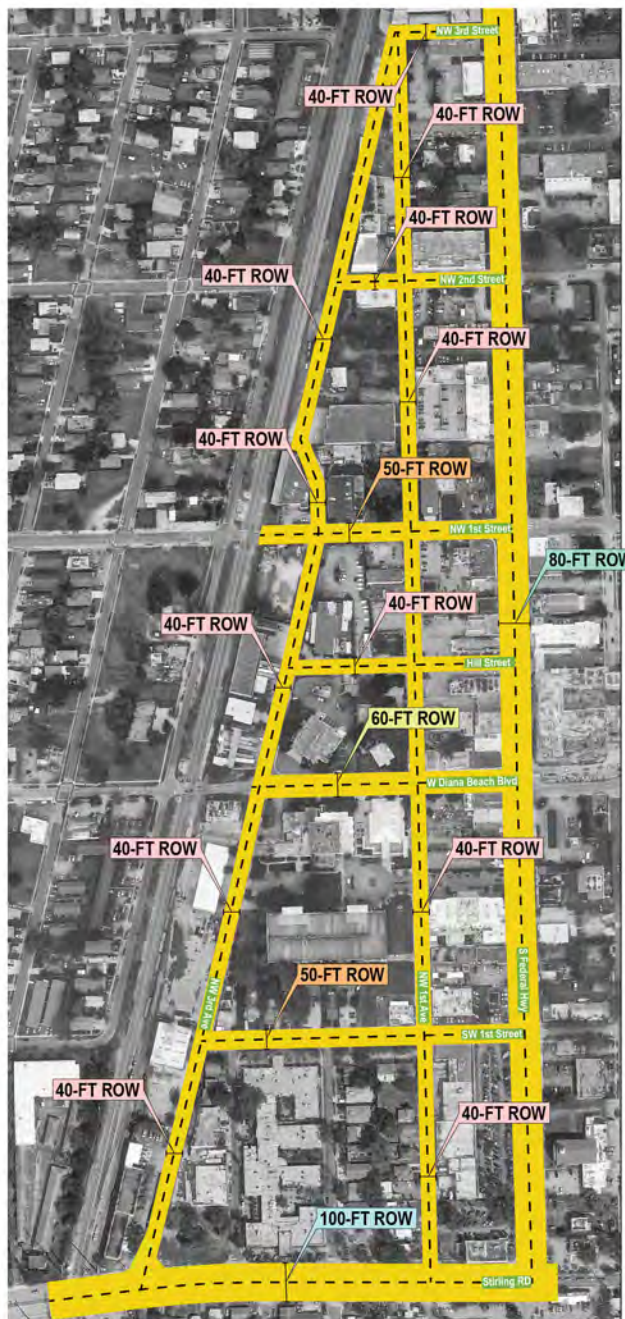
Calvin, Giordano & Associates, Inc.  
A SAFEbuilt COMPANY

PROGRESS MEETING

August 14, 2024

13





# Recommendations | ROW and Traffic Patterns



Calvin, Giordano & Associates, Inc.  
A SAFEbuilt COMPANY





Calvin, Giordano & Associates, Inc.  
A SAFEbuilt<sup>®</sup> COMPANY













Proposed Section @ 16-ft wide clearance



Proposed Section @ 20-ft wide clearance



# Back-of-House Screening

03

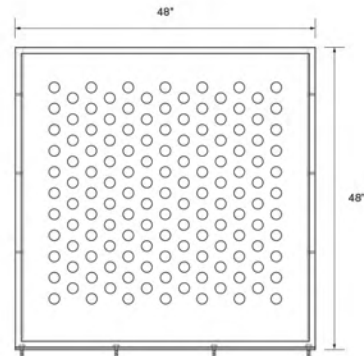
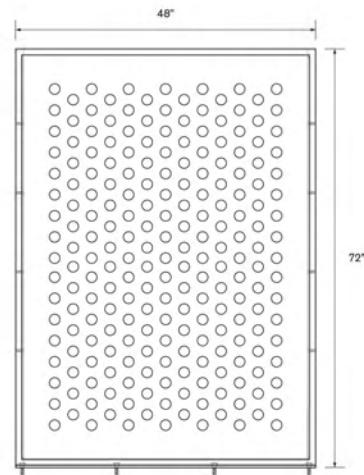


Calvin, Giordano & Associates, Inc.  
A SAFEbuilt COMPANY











# Activation Strategy

04



Calvin, Giordano & Associates, Inc.  
A SAFEbuilt COMPANY

PROGRESS MEETING

August 14, 2024

22



# Livability



Calvin, Giordano & Associates, Inc.  
A SAFEbuilt COMPANY





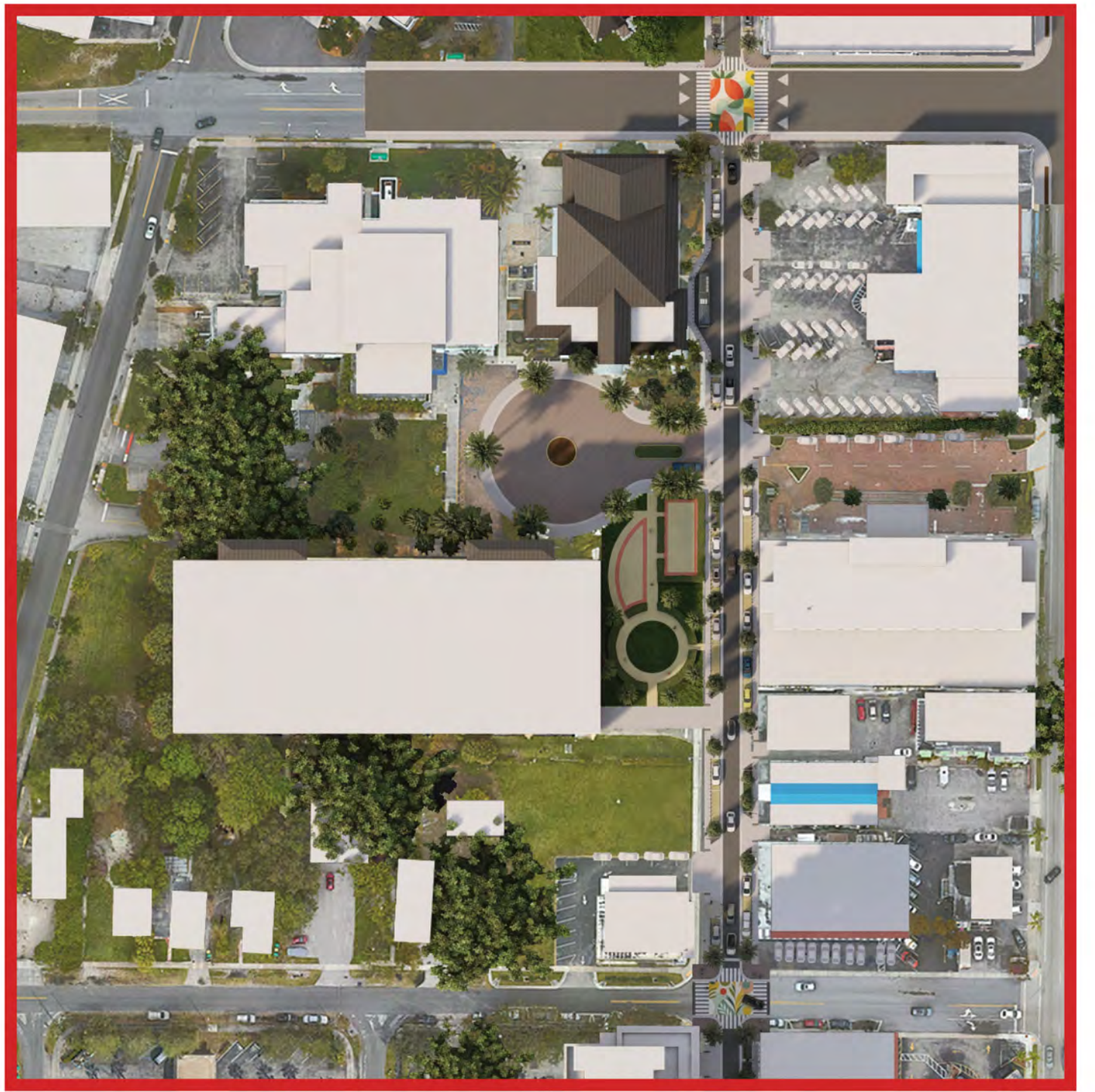
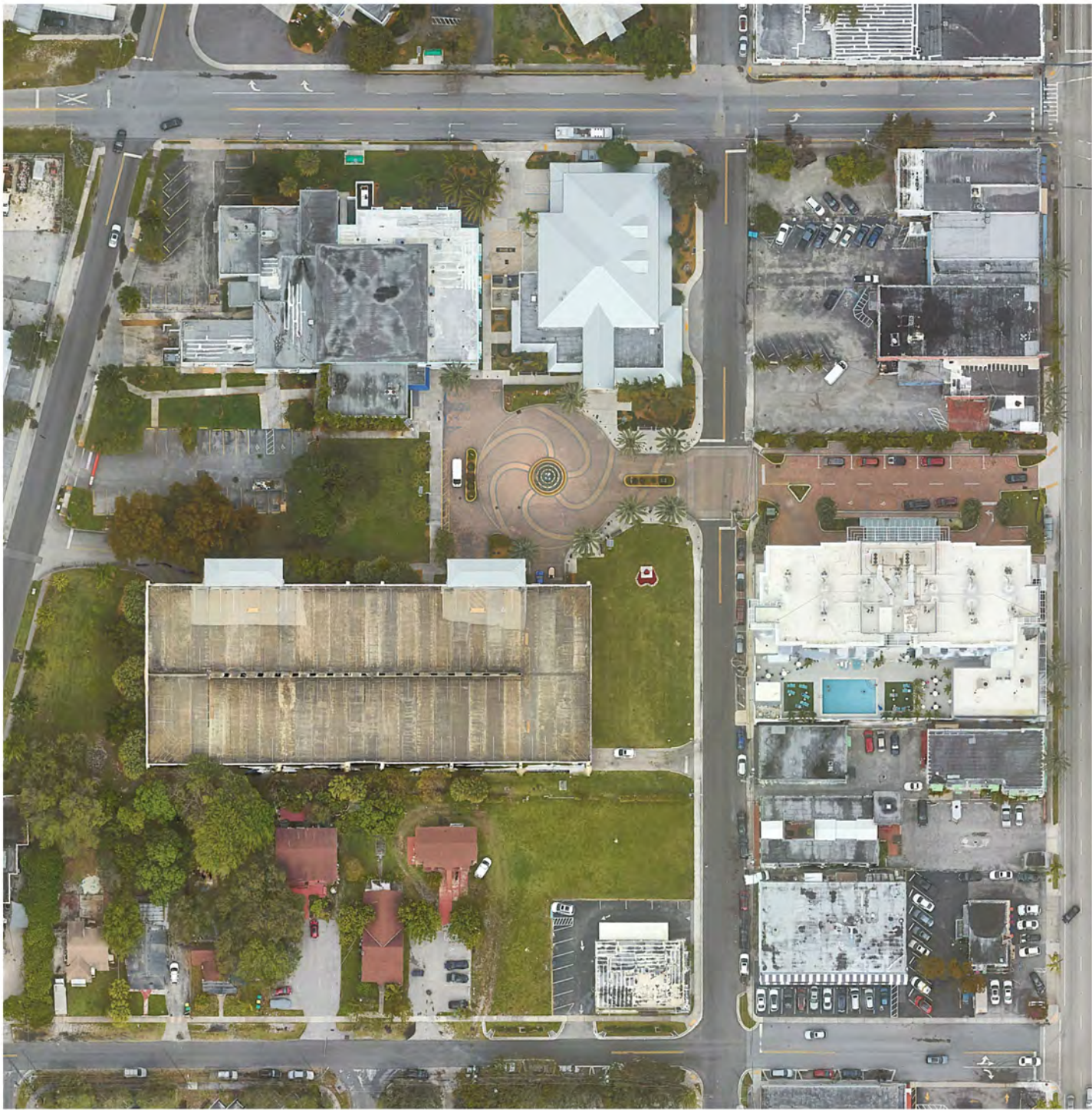


# Public Space



Calvin, Giordano & Associates, Inc.  
A SAFEbuilt COMPANY





Calvin, Giordano & Associates, Inc.  
A SAFEbuilt COMPANY





Calvin, Giordano & Associates, Inc.  
A SAFEbuilt COMPANY





Calvin, Giordano & Associates, Inc.  
A SAFEbuilt COMPANY





# Approach | From 'Line' to 'Place'





# Approach | From 'Line' to 'Place'





Calvin, Giordano & Associates, Inc.  
A SAFEbuilt COMPANY





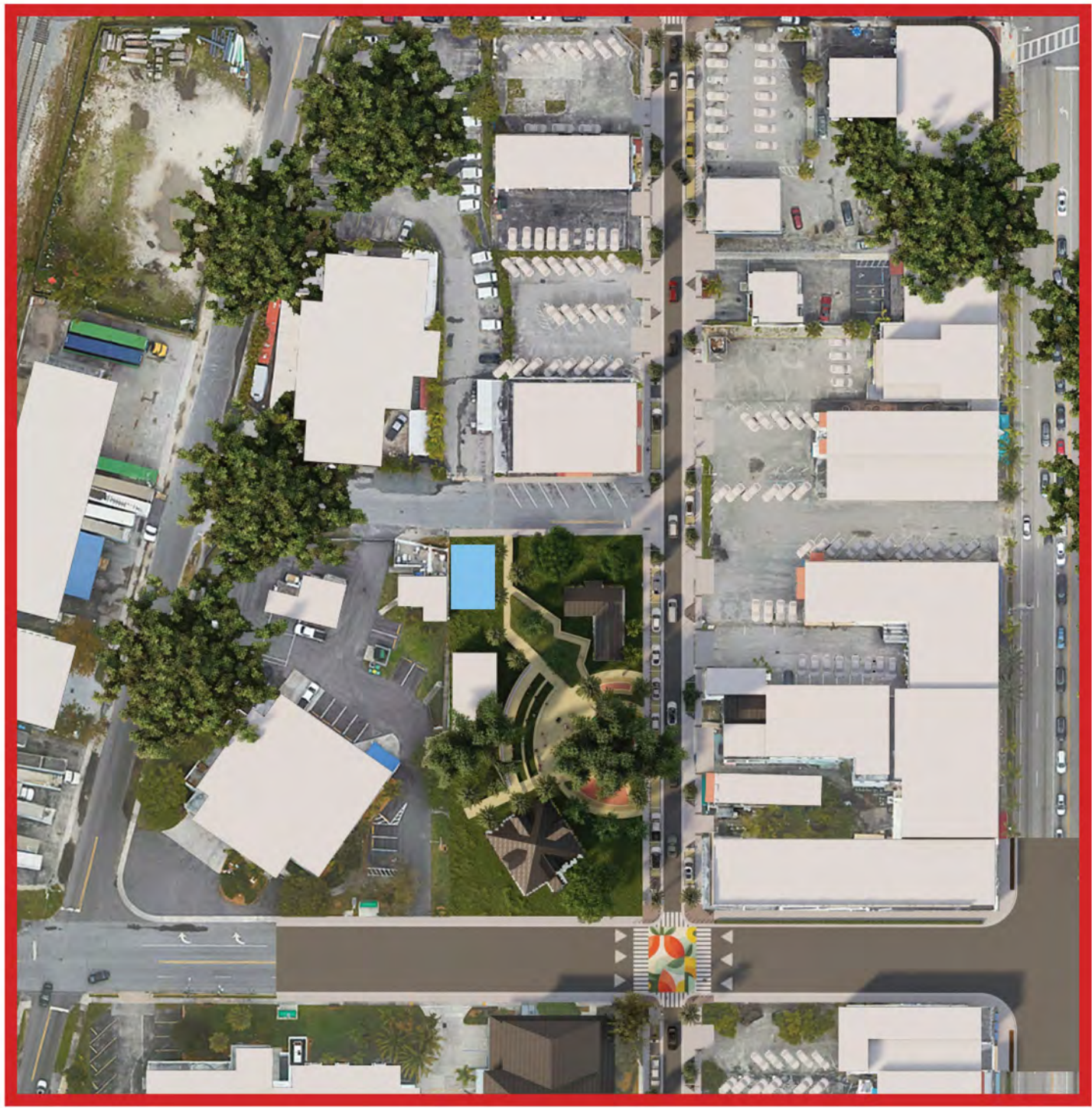
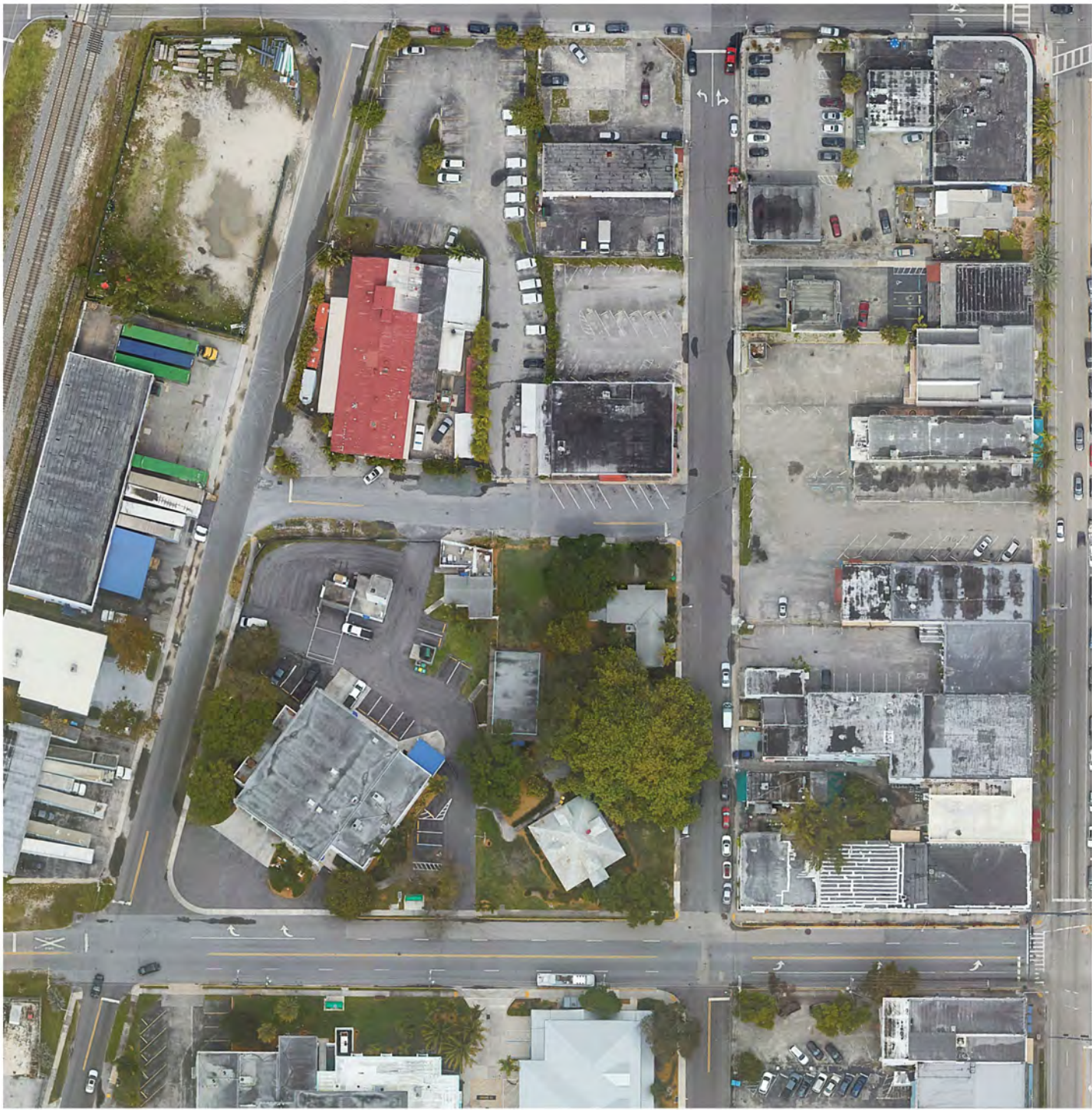
Public Services Department  
City of Dania Beach



From: 158 N Federal Hwy

To: Area Next  
to Women's Club





Calvin, Giordano & Associates, Inc.  
A SAFEbuilt COMPANY









Calvin, Giordano & Associates, Inc.  
A SAFEbuilt COMPANY





Calvin, Giordano & Associates, Inc.  
A SAFEbuilt COMPANY



# Events



Calvin, Giordano & Associates, Inc.  
A SAFEbuilt COMPANY

















Calvin, Giordano & Associates, Inc.  
A SAFEbuilt COMPANY





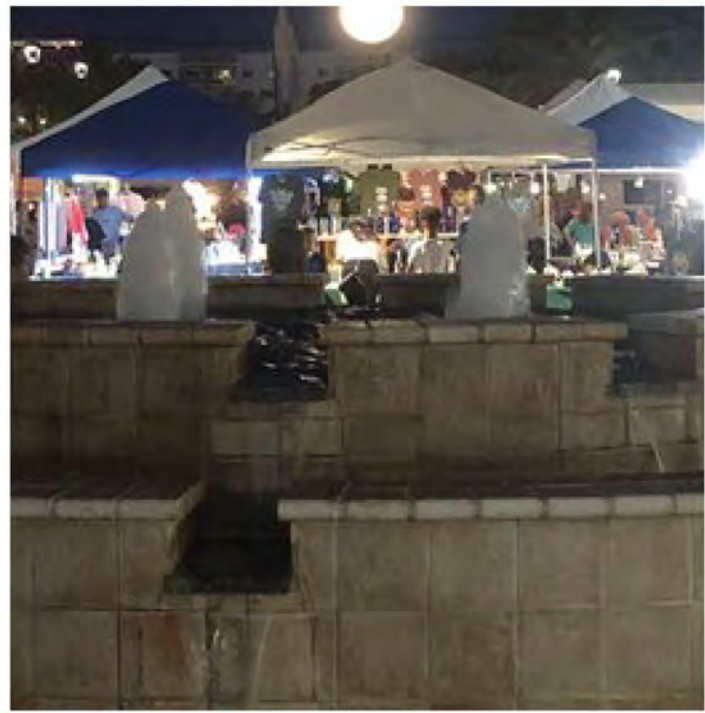


# Fountain



Calvin, Giordano & Associates, Inc.  
A SAFEbuilt COMPANY









Calvin, Giordano & Associates, Inc.  
A SAFEbuilt COMPANY





Calvin, Giordano & Associates, Inc.  
A SAFEbuilt COMPANY







# Placemaking Components

05



Calvin, Giordano & Associates, Inc.  
A SAFEbuilt COMPANY



# Intersections Paving Design























**DANIA BEACH BLVD**





**NW 1ST STREET**



**NW 2ND STREET**

Placemaking Components

MODULE













Placemaking Components

MODULE



Calvin, Giordano & Associates, Inc.  
A SAFEbuilt COMPANY





PRODUCT IMAGE



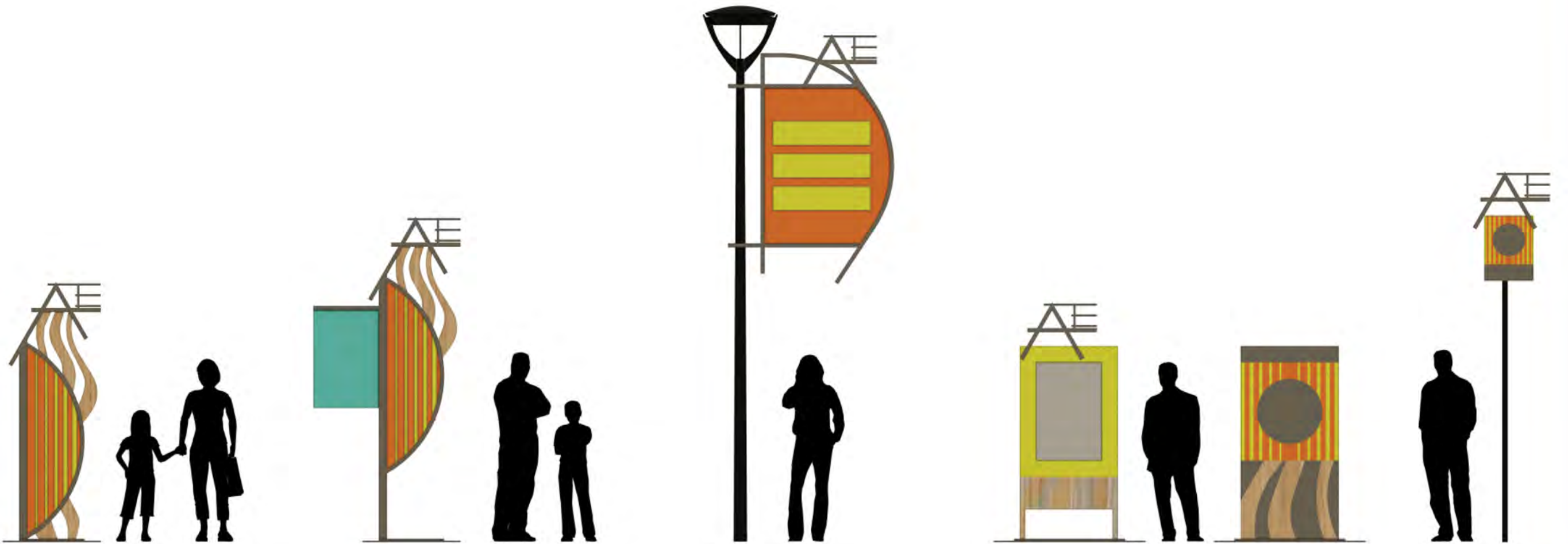
Calvin, Giordano & Associates, Inc.  
A SAFEbuilt COMPANY



# Wayfinding



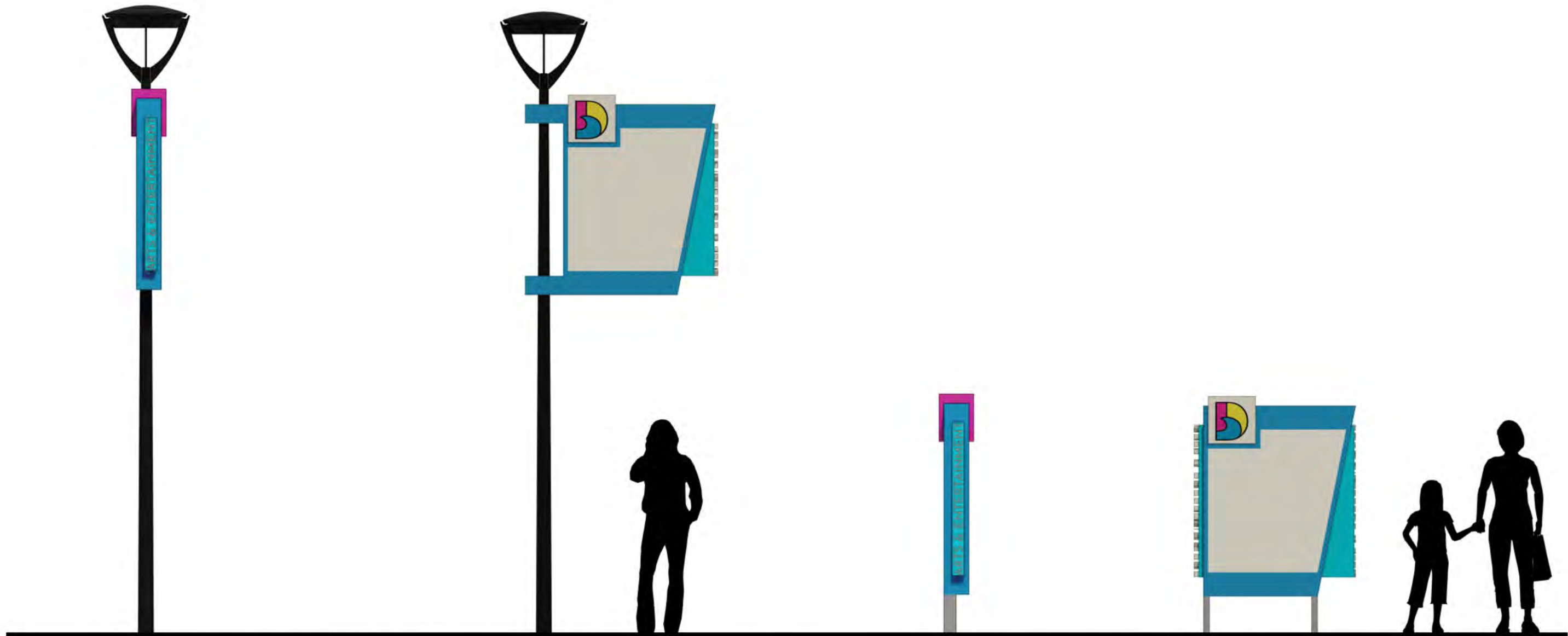












**DIRECTIONAL VEHICULAR WAYFINDING**

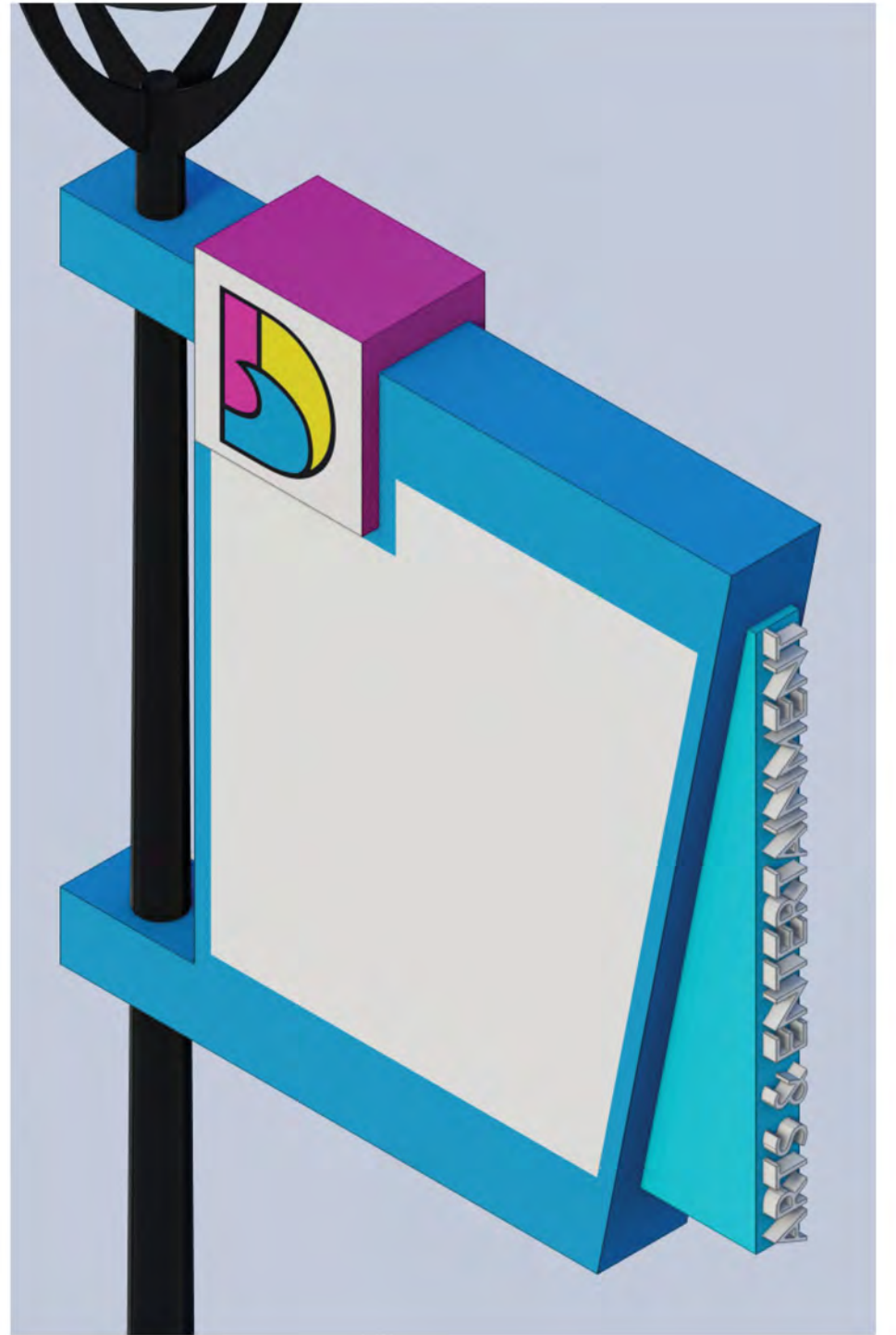
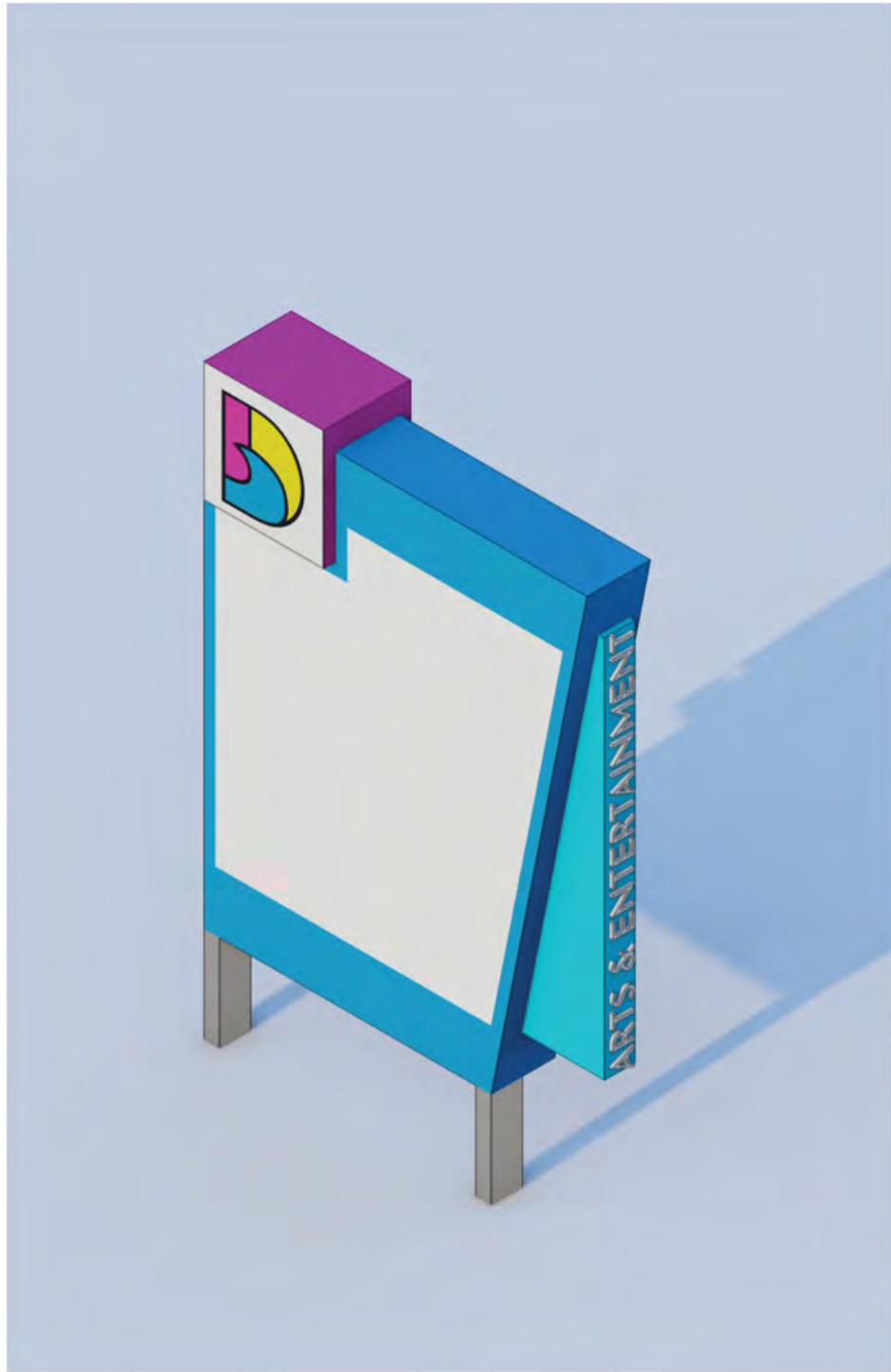
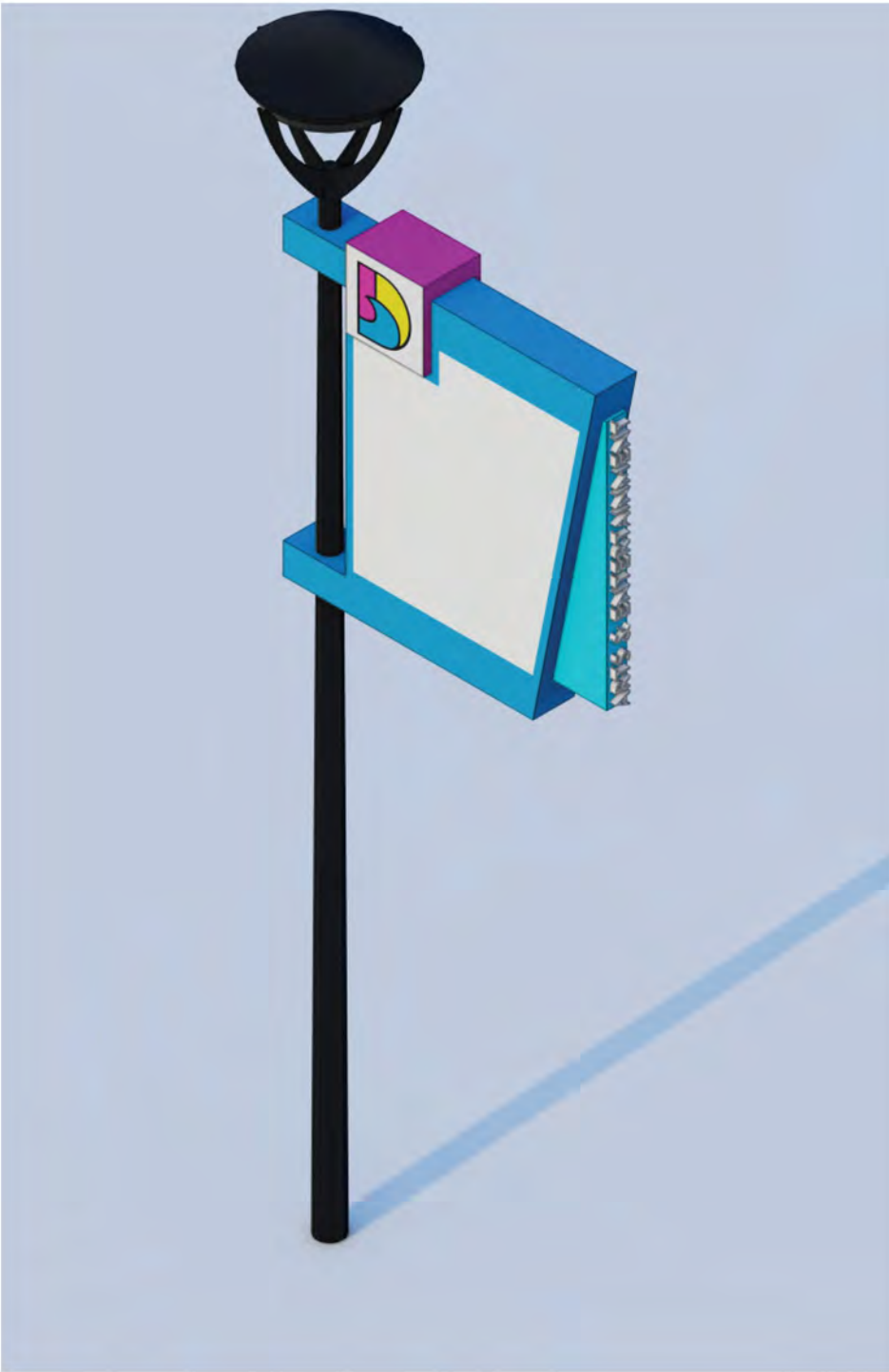
**MAP PEDESTRIAN WAYFINDING**

**MODULE** Placemaking Components

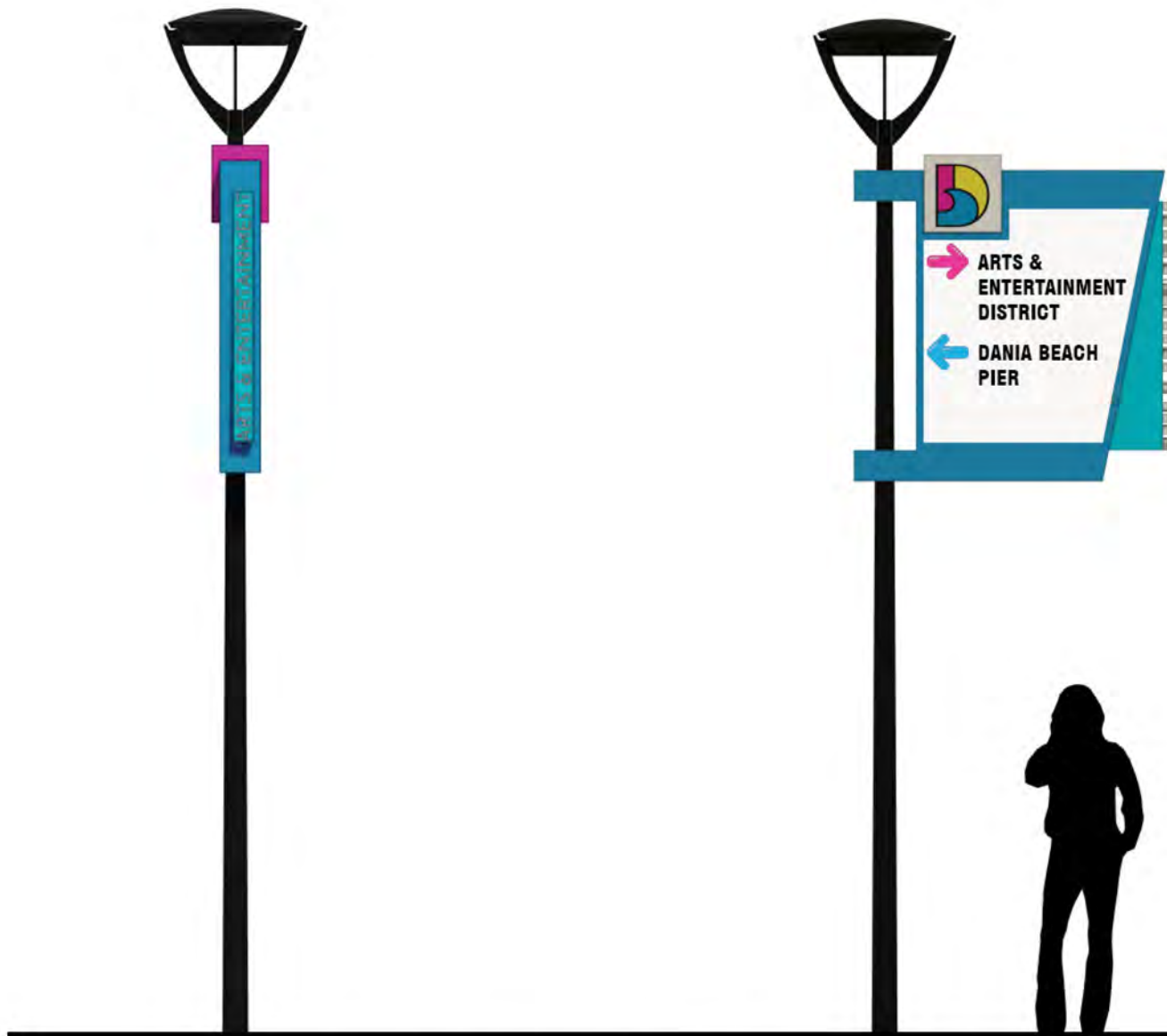


Calvin, Giordano & Associates, Inc.  
A SAFEbuilt COMPANY









**DIRECTIONAL VEHICULAR WAYFINDING**



**MAP PEDESTRIAN WAYFINDING**























# Thank you

**Gianno Feoli, PLA ASLA**

GFeoli@CGAsolutions.com

Director of Landscape Urbanism & Design

Calvin, Giordano & Associates, Inc.



Calvin, Giordano & Associates, Inc.  
A SAFEbuilt<sup>®</sup> COMPANY